

CORPORATE AND ECONOMY NEWS

- **Tata Motors Q1 FY25 (Consolidated, YoY):** Revenue up 5.7% at Rs 1,08,048 crore versus Rs 1,02,236 crore. Ebitda up 14.4% at Rs 15,509 crore versus Rs 13,559 crore. Margin up 109 basis points at 14.35% versus 13.26. Net profit up 72.43% at Rs 5,692 crore versus loss of Rs 3,301 crore.
- **ITC Q1 FY25 (Standalone, YoY):** Revenue up 7.2% to Rs 17,000 crore versus Rs 15,828 crore. Ebitda up 0.2% to Rs 6,296 crore versus Rs 6,248 crore. Margin at 37% versus 39.5%. Net Profit up 0.3% at Rs 4,917 crore versus Rs 4,903 crore.
- **Kalyan Jewellers Q1 FY25 (Consolidated, YoY):** Revenue up 26.5% at Rs 5,535 crore vs Rs 4,376 crore. Ebitda up 16% at Rs 376 crore vs Rs 323 crore. Ebitda margin at 6.8% vs 7.4%. Net profit up 24% at Rs 178 crore vs Rs 144 crore
- **Godrej Agrovet Q1 FY25 (Consolidated, YoY):** Revenue down 6.4% at Rs 2,351 crore versus Rs 2,510 crore. Ebitda up 17.2% at Rs 226 crore versus Rs 193 crore. Margin at 9.61% versus 7.68%. Net profit up 22.9% at Rs 132 crore versus Rs 107 crore.
- **Maruti Suzuki:** The company reported total sales down 4% year-on-year at 1.75 lakh units and domestic sales down by 5% year-on-year at 1.51 lakh units for the month of July.
- **Thermax Q1 FY25 (Consolidated, YoY):** Revenue up 13% at Rs 2,184 crore versus Rs 1,933 crore . Ebitda up 7% at Rs 141 crore versus Rs 132 crore. Margin at 6.5% versus 6.8%. Net profit up 82% at Rs 109 crore versus Rs 60 crore.
- **Eicher Motors:** The company registered VE Commercial Vehicle sales up 13% year-on-year at 6,622 units, motorcycle sales down 8% year-on-year at 67,265 units, and international motorcycle sales down 14% year-on-year at 6,057 units for the month of July.
- **Morepen Laboratories:** The company has launched the QIP at a floor price of Rs 57.23 per share, which indicates a 9.2% discount to the stock's previous close.
- **Infosys:** The company received communication from Karnataka State authorities withdrawing the pre-show cause notice. The state has asked the company to submit a further response to the DGGI central authority.
- **Hero MotoCorp:** The company reported total sales down year-on-year 5.4% at 3.7 lakh units, domestic sales down 6.4% year-on-year at 3.47 lakh units, and exports up 13% at 22,739 units.
- **Godrej Agrovet:** The company is to acquire the remaining 49% stake in Godrej Tyson Foods for Rs 323 crore and set up a new feed plant in Maharashtra at an initial investment of up to Rs 110 crore.
- **SML Isuzu:** The company reported total sales down 4% year-on-year at 1,203 units.
- **Atul Auto:** The company reported total sales up 22% year-on-year at 2,572 units.
- **CreditAccess Grameen:** S. Balakrishna Kamath resigned as CFO effective Jan. 2, 2025.
- **Nestle India:** The company subscribed to a 49% stake in Dr Reddy's JV for Rs 706 crore and sold its existing medical nutrition and nutraceuticals business to the JV company for Rs 219 crore.
- **Dr. Reddy's Laboratories:** The company has also invested Rs 734 crore in a joint venture with Nestle India to undertake its nutraceutical business in India and Nepal.

MARKET SCAN

INDIAN INDICES

| Index | Clsq | Chg |
|------------|-------|--------|
| BSE Sensex | 81868 | 0.15% |
| Nifty | 25011 | 0.24% |
| Banknifty | 51564 | 0.02% |
| Inida Vix | 12.93 | -2.42% |

GLOBAL INDICES

| | | |
|-----------|-------|--------|
| DJIA | 40348 | -1.21% |
| Nasdaq | 17194 | -2.30% |
| FTSE | 8283 | -1.01% |
| CAC | 7370 | -2.14% |
| DAX | 18083 | -2.30% |
| Nikkei | 36262 | -4.89% |
| Hang Seng | 16956 | -2.02% |

SECTOR INDEX (NSE)

| | | |
|-----------|-------|--------|
| IT | 40709 | -0.35% |
| Infra | 9532 | 0.34% |
| Energy | 44954 | 1.97% |
| FMCG | 62173 | 0.15% |
| Pharma | 21790 | 0.06% |
| Auto | 26487 | -0.74% |
| Metals | 9573 | -0.11% |
| Midcap | 58490 | -0.85% |
| Nifty 500 | 23507 | -0.10% |

DII/FII INVESTMENT (IN.CR.)

| | |
|---------|-------|
| DII | -337 |
| FII/FPI | 2,089 |

Top Open Interest Gainers

| Symbol | Curr | % Chg |
|------------|--------|--------|
| BSOFT | 24.91% | -5.00% |
| INDIAMART | 20.99% | -3.18% |
| GNFC | 17.04% | -1.57% |
| CHAMBLFERT | 15.45% | 0.68% |

Top Open Interest Losers

| | | |
|----------|---------|--------|
| TVSMOTOR | -11.28% | 1.72% |
| GRANULES | -11.10% | 0.28% |
| MARUTI | -9.60% | 1.23% |
| TRENT | -6.54% | -1.17% |

FOREX MARKET

| | | |
|--------|-------|--------|
| USDINR | 83.72 | -0.01% |
| EURINR | 90.35 | -0.01% |

COMMODITY MARKET

| | | |
|----------------|---------|-------|
| Gold (\$/OZ) | 2500.20 | 0.78% |
| Silver(\$/OZ) | 29.00 | 1.82% |
| Brent (\$/Bbl) | 80.05 | 0.67% |
| Copper(\$/Lbs) | 4.09 | 0.45% |

Source: Bloombergquint, Economic Times, Business Standard, Business Line, Times of India, Mint, Indian Express, Business Today, Indian Express, Money Control, in.investing, Cnbctv18.

Source: in.investing.com; As on 8:10 am IST

GLOBAL MARKETS

Global Market Update

US stocks kicked off August sharply lower after a round of economic data on Thursday spurred concerns the economy may be slowing faster than anticipated while the Federal Reserve maintains a restrictive monetary policy.

The Dow Jones Industrial Average fell 494.82 points, or 1.21 percent, to 40,347.97, the S&P 500 lost 75.62 points, or 1.37 percent, to reach 5,446.68. Meanwhile the Nasdaq Composite lost 405.25 points, or 2.30 percent, to reach 17,194.15. U.S. elections. The benchmark U.S. 10-year note yield fell 9.8 basis points to 4.043 percent. The Dow Jones Industrial Average rose 0.24 percent to 40,842.79, the S&P 500 gained 1.58 percent to 5,522.30 and the Nasdaq Composite advanced 2.64% to 17,599.40.

Crude Oil

Oil prices rose on Friday but were set for a fourth weekly decline as signs of disappointing global fuel demand growth outweighed fears of supply disruptions in the key Middle East production region.

Gift Nifty

The GIFT Nifty is trading lower, indicating a weak start for the day. Nifty futures were trading at 24,812 at 07:00 am IST.

TECHNICAL CHART



TECHNICAL VIEW

Nifty Outlook:

Domestic benchmark indices began higher on Thursday, following global cues. The Nifty opened positively and saw steady buying interest, allowing it to conclude the day on a positive note at 25,011. Technically, the index formed a small red candle near the psychological threshold of 25,000 levels. If the index remains above 25,000 levels, the surge could extend to 25,200-25,300 levels. On the downside, 24,770 and 24,600 will provide significant support for the Nifty in the immediate term.

Bank Nifty Outlook:

The Bank Nifty index opened on a positive tone but witnessed profit booking at higher levels and ended the day on a flat to positive note at 51,564. Technically, the index is still consolidating in the band of around 51,000-52,300. Moreover, the Bank Nifty is facing rejection from a falling trend line at 52,300 levels. Thus, 52,000-52,300 will serve as a resistance zone for the Bank Nifty, while 51,000 will act as strong support.

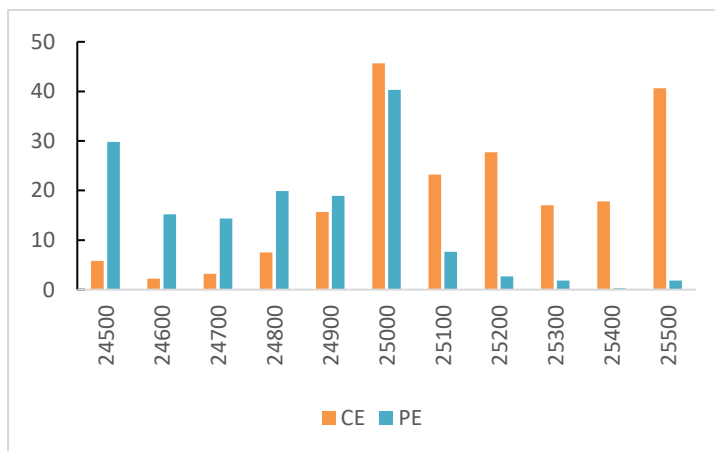
02-Aug-24

DERIVATIVES INDICATORS

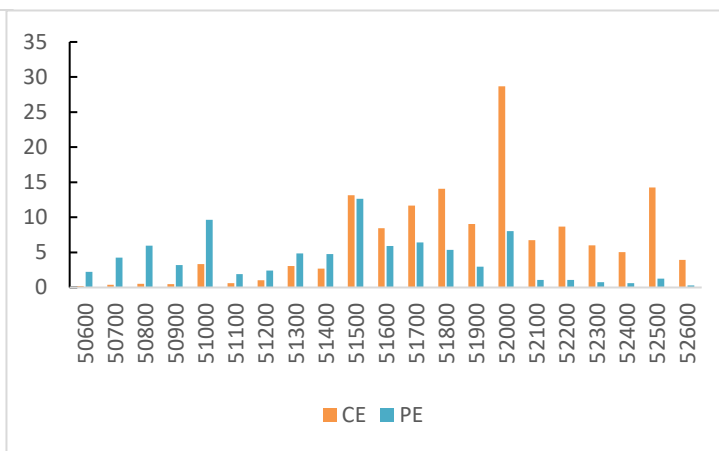
| | Last Closing | Previous Day | Changes % | Out Come |
|----------------------|--------------|--------------|-----------|----------|
| NIFTY AUG FUT | 25032.25 | 25013.15 | 0.08% | Neutral |
| NIFTY OI (Total) | 16926400 | 16578925 | 2.10% | |
| BANKNIFTY AUG FUT | 51753.40 | 51815.05 | -0.12% | Neutral |
| BANKNIFTY OI (Total) | 2688660 | 2590815 | 3.78% | |
| NIFTY PCR - OI | 1.29 | 1.28 | 0.78% | Neutral |
| INDIA VIX | 12.93 | 13.25 | -2.42% | Neutral |

WEEKLY OPTION'S OPEN INTEREST

Nifty Option OI - 08 Aug (OI in Lakhs)



BankNifty Option OI - 07 Aug (OI in Lakhs)



FII DERIVATIVES STATISTICS (In Cr.)

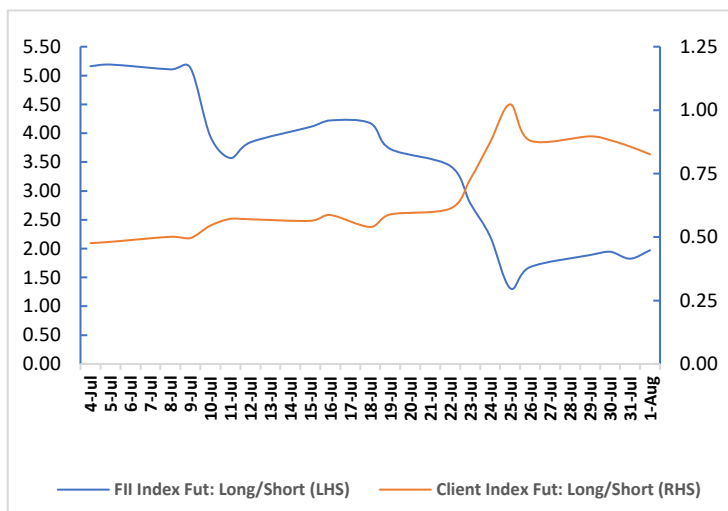
| | |
|---------------|-----------|
| INDEX FUTURES | 1390.15 |
| INDEX OPTIONS | -40694.18 |
| STOCK FUTURES | 1626.76 |
| STOCK OPTIONS | -1368.59 |

Securities in Ban For Trade Date 02-AUG-2024:

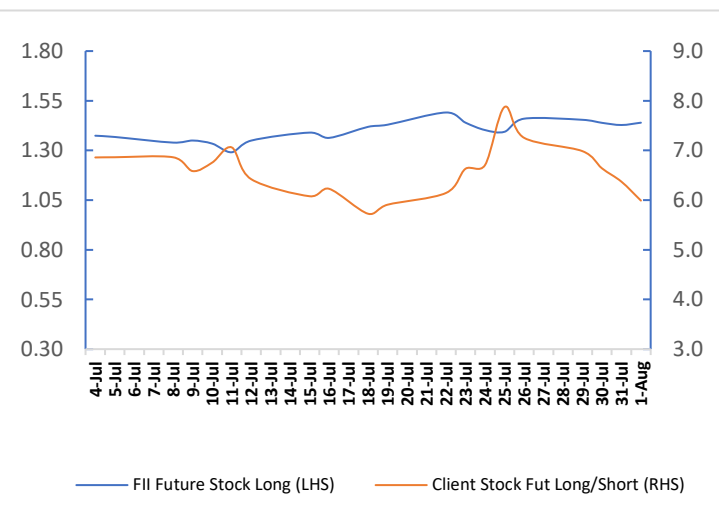
BSOFT GNFC GRANULES INDIACEM INDIAMART RBLBANK

Participant wise Open Interest (no. of contracts)

Fii Vs Client Index Fut Long Short Ratio



Fii Vs Client Stock Fut Long Short Ratio



Retail Research Technical & Fundamental Calls for the Month of August-2024

Positional Calls (For 1-3 Months)

| Date | Company | Rec | Rec Price | Stop Loss | Target | Status | Net Returns% |
|--------|------------|------|-------------|-----------|-------------|--------|--------------|
| 05-Mar | TRIDENT | Accu | 38.94 | 34.64 | 47.64-51.64 | Open | |
| 25-Jun | HAPPSTMNDS | Accu | 820-840 | 795 | 900-950 | Open | |
| 27-Jun | BAJAJ_AUTO | Accu | 9225-9425 | 8900 | 10000-10040 | Booked | 5.06% |
| 01-Jul | Reliance | Accu | 3035-3115 | 2940 | 3300-3500 | Open | |
| 19-Jul | BAJAJFINSV | Accu | 1598-1636 | 1560 | 1720-1800 | Open | |
| 25-Jul | NESTLEIND | Accu | 2390-2470 | 2330 | 2650-2800 | Open | |
| 25-Jul | SCHAEFFLER | Accu | 3825-4025 | 3600 | 4500-5000 | Open | |
| 26-Jul | LTF | Accu | 170.5-176.5 | 164 | 195-205 | Open | |
| 26-Jun | RKFORGE | Accu | 820-840 | 790 | 900-950 | Open | |
| 29-Jul | CARBORUNIV | Accu | 1690-1730 | 1645 | 1840-1940 | Open | |
| 30-Jul | LTTS | Accu | 5040-5170 | 4800 | 5540-5900 | Open | |
| 30-Jul | VBL | Accu | 1540-1590 | 1495 | 1700-1800 | Open | |
| 30-Jul | IOC | Accu | 172.5-182.5 | 167 | 195-210 | Open | |
| 01-Aug | TRENT | Accu | 5625-5775 | 5400 | 6200-6500 | Open | |

Investment Idea (For Long Term)

| Date | Company | Rec | Rec Price | Target | Status | Net Returns% |
|--------|------------|------|-----------|--------|--------|--------------|
| 24-Nov | ADORWELD | Accu | 1500-1520 | 1806 | Open | |
| 01-Jan | AIAENG | Accu | 3650-3690 | 4909 | Open | |
| 03-Jan | TCI | Accu | 825-835 | 1080 | Open | |
| 24-Jan | APLAPOLLO | Accu | 1495-1505 | 2077 | Open | |
| 29-Jan | AUTOAXLES | Accu | 2120-2130 | 2906 | Open | |
| 23-Feb | ASTRAL | Accu | 2080-2100 | 2627 | Open | |
| 25-Apr | CAPLIPOINT | Accu | 1320-1330 | 1675 | Open | |
| 02-Jul | TIMETECHNO | Accu | 320-330 | 426 | Open | |
| 31-Jul | ALICON | Accu | 1235-1265 | 1765 | Open | |

For More Information on Retail Research Products please visit <https://www.investmentz.com/research-services>

Asit C. Mehta

INVESTMENT INTERMEDIATES LTD.

Information pertaining to Asit C. Mehta Investment Intermediates Limited (ACMIIL):

ACMIIL is a SEBI registered Stock Broker, Merchant Banker, Portfolio Manager, Research Analyst and Depository Participant. It is also a AMFI registered Mutual Fund Distributor. Its associate/group companies are Asit C. Mehta Commodity Services Limited, Nucleus IT Enabled Services, and Asit C. Mehta Financial Services Limited (all providing services other than stock broking, merchant banking and portfolio management services.).

Disclosures

ACMIIL/its associates and its Research analysts have no financial interest in the companies covered on the report. ACMIIL/its associates and Research analysts did not have actual/beneficial ownership of one per cent or more in the companies being covered at the end of month immediately preceding the date of publication of the research report. ACMIIL/its associates or Research analysts have no material conflict of interest, have not received any compensation/benefits for any reason (including investment banking/ merchant banking or brokerage services) from either the companies concerned/third parties with respect to the companies covered in the past 12 months. ACMIIL/its associates and research analysts have neither managed or co-managed any public offering of securities of the companies covered nor engaged in market making activity for the companies being covered. Further, the companies covered neither are/nor were a client during the 12 months preceding the date of the research report. Further, the Research analyst/s covering the companies covered herein have not served as an officer/director or employee of the companies being covered

Disclaimer:

This report is based on information that we consider reliable, but we do not represent that it is accurate or complete and it should not be relied upon such. ACMIIL or any of its affiliates or employees shall not be in any way responsible for any loss or damage that may arise to any person from any inadvertent error in the information contained in the report. To enhance transparency we have incorporated a Disclosure of Interest Statement in this document. This should however not be treated as endorsement of the views expressed in the report.

You are also requested to refer to the disclaimer (which is deemed to be part and parcel and is applicable to this research report as well) :<http://www.investmentz.com/disclaimer>

Retail Research Desk:

Devang Shah E: devang.shah@acm.co.in
 Hrishikesh Yedve E: hrishikesh.yedve@acm.co.in
 Ruchi Jain E: ruchi.jain@acm.co.in
 Kamlesh Jain E: kamlesh.jain@acm.co.in
 Email: retailresearch@acm.co.in

Research Analyst Registration Number:

INH00002483

CIN: U65990MH1993PLC075388

Download Investmentz app:



Follow us on:

