

CORPORATE AND ECONOMY NEWS

- **Cyient:** The company approved the sale of a 14.5% stake in the arm of Cyient DLM via a block deal. The sale is to be completed by Aug. 21.
- **Sansera Engineering:** The company approved raising funds of Rs 1,200 crore via QIP or other means.
- **Dhanuka Agritech:** The company approved the buyback of 5 lakh shares at Rs 2,000 apiece. The total value of the buyback is Rs 100 crore.
- **Genus Power Infrastructure:** The company received three orders worth Rs 3,609 crore for the appointment of advanced metering infrastructure service providers.
- **GE T&D India:** Promoters are in the process of reviewing their shareholding structure and express strong intention to continue as the majority shareholder block of the company. The promoters also added that they would evaluate the possibility of a minority stake sale.
- **Petronet LNG:** The company entered into a MoU for the supply of LNG with LTL Holdings in Sri Lanka.
- **CESEC:** The company arm incorporated a wholly owned subsidiary, Ecofusion Power, to explore opportunities in the renewable power sector.
- **Zaggle Prepaid Ocean Services:** Zuzu Software Services sold a 4% stake in the company via the open market on Monday.
- **GIC Housing Finance:** The company clarified that a report on the GIC weighing stake sale is incorrect. The company is unaware of any developments in this regard.
- **P I Industries:** The UK Companies Court approved the acquisition of Plant Health Care for £32.8 million. The acquisition is to be completed by Aug. 20.
- **BGR Energy Systems:** The company received a letter of termination of contract from Jharkhand Urja Sancharan Nigam. There is no material impact on financials or operations.
- **Exide Industries:** The company made an investment of Rs 75 crore in Li-ion making subsidiary Exide Energy Solutions Ltd. The company's total investment in the arm stands at Rs 2,652 crore.
- **RMC Switchgears:** The company unit received Rajasthan Renewable Energy Corp.'s nod to set up a 50 MW renewable energy park in the state.
- **NHPC:** A subsidence or landslide occurred over the Tail Race Tunnel outlet structure and behind the gas-insulated substation building of the 510 MW Teesta-V power station in Sikkim. The station was undergoing restoration after the October flash floods.
- **Ola Electric Mobility:** Ola's scooters S1 X 3 kWh and S1 X 4 kWh have received Certification for Compliance with the eligibility assessment requirements as per the Production Linked Incentive (PLI) scheme for the automobile and auto components industry.
- **Larsen & Toubro;** The Bombay High Court has quashed and set aside the show-cause notice issued by the GST authorities. The company had filed a Writ Petition in the Bombay High Court against the show-cause notice issued by the Principal Commissioner of GST and Service Tax, Mumbai, regarding a service tax demand of Rs 2,237 crore on an erstwhile subsidiary for tax already paid by the company with respect to certain transactions undertaken post-demerger.

MARKET SCAN

INDIAN INDICES

| Index | Clsq | Chg |
|------------|-------|--------|
| BSE Sensex | 80803 | 0.47% |
| Nifty | 24699 | 0.51% |
| Banknifty | 50803 | 0.86% |
| Inida Vix | 13.82 | -3.46% |

GLOBAL INDICES

| | | |
|-----------|-------|--------|
| DJIA | 40835 | -0.15% |
| Nasdaq | 17816 | -0.33% |
| FTSE | 8273 | -1.00% |
| CAC | 7486 | -0.22% |
| DAX | 18358 | -0.35% |
| Nikkei | 37803 | -0.68% |
| Hang Seng | 17379 | -0.75% |

SECTOR INDEX (NSE)

| | | |
|-----------|-------|--------|
| IT | 41573 | 0.81% |
| Infra | 9203 | 0.22% |
| Energy | 43528 | 0.45% |
| FMCG | 62241 | -0.14% |
| Pharma | 22374 | 0.61% |
| Auto | 25500 | 0.52% |
| Metals | 9205 | 0.47% |
| Midcap | 58248 | 0.84% |
| Nifty 500 | 23280 | 0.61% |

DII/FII INVESTMENT (IN.CR.)

| | |
|---------|--------|
| DII | 2,252 |
| FII/FPI | -1,458 |

Top Open Interest Gainers

| Symbol | OI Chg | Price Chg |
|------------|--------|-----------|
| ICICIPRULI | 13.91% | 3.46% |
| NATIONALUM | 11.41% | 0.30% |
| UBL | 9.56% | -1.63% |
| COFORGE | 8.04% | 0.92% |

Top Open Interest Losers

| | | |
|------------|---------|--------|
| BALRAMCHIN | -17.82% | 6.56% |
| MOTHERSON | -6.37% | 1.42% |
| BSOFT | -5.82% | -1.69% |
| INDIAMART | -5.09% | 3.29% |

FOREX MARKET

| | | |
|--------|-------|-------|
| USDINR | 83.30 | 0.03% |
| EURINR | 89.21 | 0.11% |

COMMODITY MARKET

| | | |
|----------------|---------|--------|
| Gold (\$/OZ) | 2554.95 | 0.17% |
| Silver(\$/OZ) | 29.55 | 0.11% |
| Brent (\$/Bbl) | 77.01 | -0.25% |
| Copper(\$/Lbs) | 4.20 | 0.05% |

Source: Bloombergquint, Economic Times, Business Standard, Business Line, Times of India, Mint, Indian Express, Business Today, Indian Express, Money Control, in.investing, Cnbctv18.

Source: in.investing.com; As on 8:10 am IST

GLOBAL MARKETS

Global Market Update

US stocks closed slightly lower on Tuesday, breaking their recent winning streak amid a few market-moving catalysts ahead of the Jackson Hole Economic Symposium, set to get underway on Thursday. The Dow Jones Industrial Average fell 61.56 points, or 0.15%, to 40,834.97, the S&P 500 lost 11.13 points, or 0.20%, to 5,597.12 and the Nasdaq Composite dropped 59.83 points, or 0.33%, to 17,816.94.

Crude Oil

Oil prices slipped on Wednesday on estimates showing swelling U.S. crude inventories and expectations that tensions in the Middle East were easing following a tour of the region by mediators.

Gift Nifty

The GIFT Nifty is trading marginally lower, indicating a flat to negative start for the day. Nifty futures were trading at 24,698 at 06:50 am IST.



TECHNICAL VIEW

Nifty Outlook:

The domestic benchmark indices opened on a positive note, in line with global cues. The Nifty started the day with a gap up and maintained a bullish stance throughout, eventually closing on a strong note at 24,699. Technically, the Nifty filled the first gap hurdle and formed a bullish candle on the daily scale, indicating strength. On the downside, the 21-Day Exponential Moving Average (DEMA), positioned near 24,410, will serve as strong support in the short term. As long as the index remains above 24,400, the bullish momentum is expected to persist. On the upside, the next gap hurdle is placed near 24,960, which will act as the first resistance for the index, followed by the previous all-time high around 25,080.

Bank Nifty Outlook:

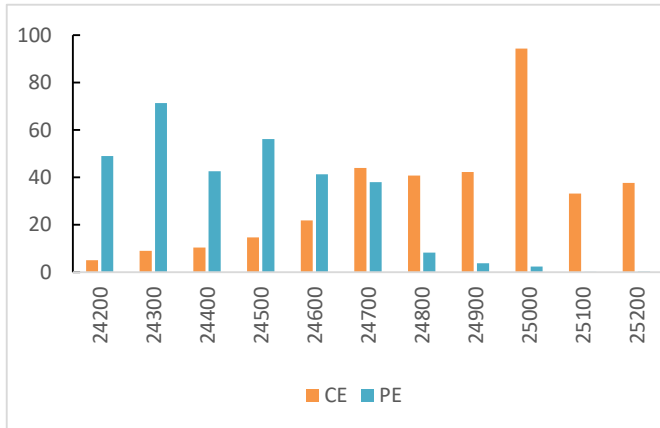
The Bank Nifty also opened with a gap up and saw continuous buying interest. Consequently, the index ended the day on a positive note at 50,803. Technically, the Bank Nifty formed a green candle on the daily chart, indicating strength. The index registered a high of 51,026 and closed just above the barrier of the 21-DEMA (50,770), indicating further bullishness. Sustainance above 50,770 could push the index towards the 51,200-51,500 zone.

DERIVATIVES INDICATORS

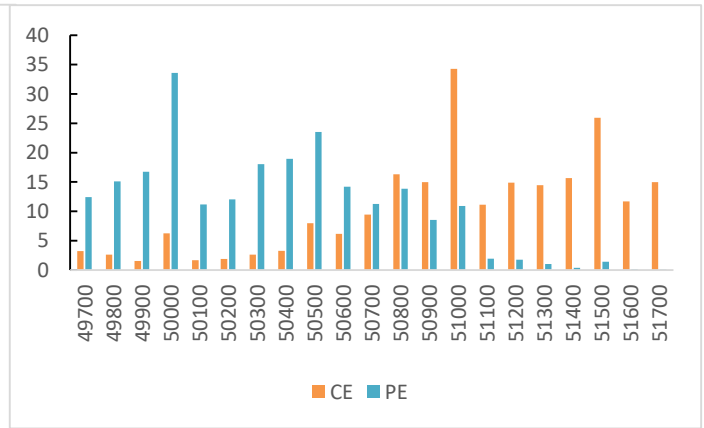
| | Last Closing | Previous Day | Changes % | Out Come |
|----------------------|--------------|--------------|-----------|----------------|
| NIFTY AUG FUT | 24711.25 | 24595.75 | 0.47% | Neutral |
| NIFTY OI (Total) | 12867650 | 12911175 | -0.34% | |
| BANKNIFTY AUG FUT | 50892.20 | 50485.25 | 0.81% | Short Covering |
| BANKNIFTY OI (Total) | 3496035 | 3796935 | -7.92% | |
| NIFTY PCR - OI | 1.27 | 1.17 | 8.55% | Neutral |
| INDIA VIX | 13.82 | 14.32 | -3.46% | Neutral |

WEEKLY OPTION'S OPEN INTEREST

Nifty Option OI - 22 Aug (OI in Lakhs)



BankNifty Option OI - 21 Aug (OI in Lakhs)



FII DERIVATIVES STATISTICS (In Cr.)

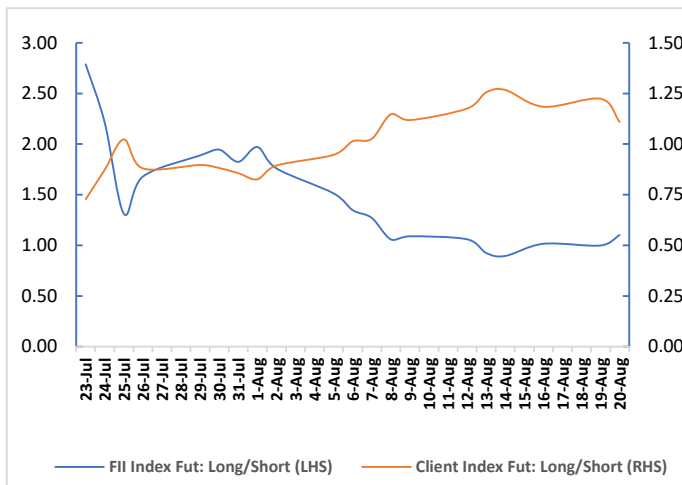
| | |
|---------------|-----------|
| INDEX FUTURES | 1974.15 |
| INDEX OPTIONS | -12476.62 |
| STOCK FUTURES | 2323.37 |
| STOCK OPTIONS | 1626.68 |

Securities in Ban For Trade Date 21-AUG-2024:

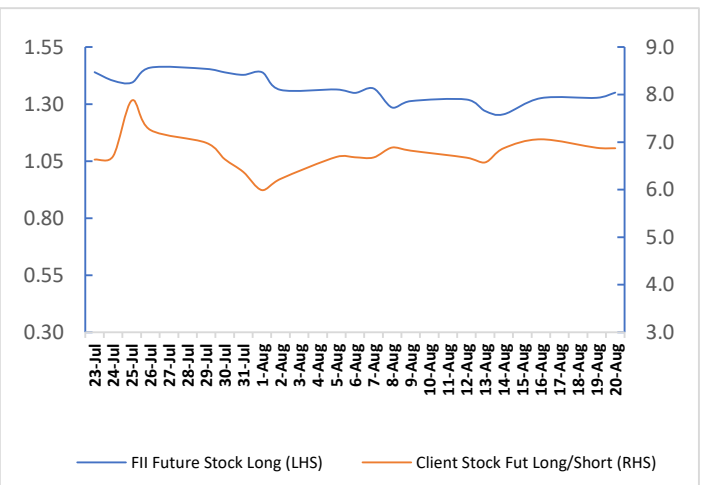
AARTIIND ABFRL BALRAMCHIN BANDHANBNK BSOFT GNFC GRANULES
HINDCOPPER INDIACEM LICHSGFIN MANAPPURAM NATIONALUM PEL RBLBANK
SAIL SUNTV

Participant wise Open Interest (no. of contracts)

Fiis Vs Client Index Fut Long Short Ratio



Fiis Vs Client Stock Fut Long Short Ratio



Retail Research Technical & Fundamental Calls for the Month of August-2024
Positional Calls/ Smart Delivery/ Techno-Funda (Short to Medium term)

| Date | Company | Rec | Rec Price | Stop Loss | Target | Status | Net Returns% |
|--------|------------|------|---------------|-----------|-----------|--------|--------------|
| 25-Jul | NESTLEIND | Accu | 2390-2470 | 2330 | 2650-2800 | Open | |
| 25-Jul | SCHAEFFLER | Accu | 3825-4025 | 3600 | 4500-5000 | Open | |
| 30-Jul | LTTS | Accu | 5040-5170 | 4800 | 5540-5900 | Booked | 5.09% |
| 06-Aug | LT | Accu | 3495-3595 | 3440 | 3750-3900 | Open | |
| 06-Aug | BEL | Accu | 280-292 | 268 | 320-340 | Open | |
| 08-Aug | BHARTIARTL | Accu | 1426-1456 | 1390 | 1530-1600 | Open | |
| 08-Aug | ASHOKLEY | Accu | 241.5-247.5 | 232 | 262-277 | Booked | 5.15% |
| 08-Aug | POONAWALLA | Accu | 358-368 | 345 | 400-430 | Booked | 4.80% |
| 26-Jun | HINDUNILVR | Accu | 2650-2730 | 2540 | 3000-3290 | Open | |
| 13-Aug | THERMAX | Accu | 4195-4325 | 3970 | 4800-5000 | Open | |
| 19-Aug | HINDZINC | Accu | 481-491 | 468 | 520-550 | Open | |
| 19-Aug | UDS | Accu | 315.50-327.50 | 298 | 365-400 | Open | |
| 20-Aug | ICICIGI | Accu | 1975-2035 | 1900 | 2170-2300 | Open | |
| 20-Aug | TATAMTRDVR | Accu | 718-748 | 699 | 800-850 | Open | |
| 20-Aug | TATACONSUM | Accu | 1143-1173 | 1120 | 1230-1300 | Open | |

Investment Idea (For Long Term)

| Date | Company | Rec | Rec Price | Target | Status | Net Returns% |
|--------|------------|------|-----------|--------|--------|--------------|
| 15-Sep | TRIVENI | Accu | 370-375 | 480 | Booked | 28.86% |
| 24-Nov | ADORWELD | Accu | 1500-1520 | 1806 | Open | |
| 03-Jan | TCI | Accu | 825-835 | 1080 | Open | |
| 24-Jan | APLAPOLLO | Accu | 1495-1505 | 2077 | Open | |
| 29-Jan | AUTOAXLES | Accu | 2120-2130 | 2906 | Open | |
| 23-Feb | ASTRAL | Accu | 2080-2100 | 2627 | Open | |
| 25-Apr | CAPLIPOINT | Accu | 1320-1330 | 1675 | Booked | 26.42% |
| 02-Jul | TIMETECHNO | Accu | 320-330 | 426 | Open | |
| 31-Jul | ALICON | Accu | 1235-1265 | 1765 | Open | |

For More Information on Retail Research Products please visit <https://www.investmentz.com/research-services>

Asit C. Mehta

INVESTMENT INTERMEDIATES LTD.

Retail Research Desk:

Devang Shah E: devang.shah@acm.co.in
 Hrishikesh Yedve E: hrishikesh.yedve@acm.co.in
 Ruchi Jain E: ruchi.jain@acm.co.in
 Kamlesh Jain E: kamlesh.jain@acm.co.in
 Email: retailresearch@acm.co.in

Research Analyst Registration Number:

INH000016940

CIN: U65990MH1993PLC075388

Download Investmentz app:


Information pertaining to Asit C. Mehta Investment Intermediates Limited (ACMIL):

ACMIL is a SEBI registered Stock Broker, Merchant Banker, Portfolio Manager, Research Analyst and Depository Participant. It is also a AMFI registered Mutual Fund Distributor. Its associate/group companies are Asit C. Mehta Commodity Services Limited, Nucleus IT Enabled Services, and Asit C. Mehta Financial Services Limited (all providing services other than stock broking, merchant banking and portfolio management services.).

Disclosures

ACMIL/its associates and its Research analysts have no financial interest in the companies covered on the report. ACMIL/its associates and Research analysts did not have actual/beneficial ownership of one per cent or more in the companies being covered at the end of month immediately preceding the date of publication of the research report. ACMIL/its associates or Research analysts have no material conflict of interest, have not received any compensation/benefits for any reason (including investment banking/ merchant banking or brokerage services) from either the companies concerned/third parties with respect to the companies covered in the past 12 months. ACMIL/its associates and research analysts have neither managed or co-managed any public offering of securities of the companies covered nor engaged in market making activity for the companies being covered. Further, the companies covered neither are/nor were a client during the 12 months preceding the date of the research report. Further, the Research analyst/s covering the companies covered herein have not served as an officer/director or employee of the companies being covered

Disclaimer:

This report is based on information that we consider reliable, but we do not represent that it is accurate or complete and it should not be relied upon such. ACMIL or any of its affiliates or employees shall not be in any way responsible for any loss or damage that may arise to any person from any inadvertent error in the information contained in the report. To enhance transparency we have incorporated a Disclosure of Interest Statement in this document. This should however not be treated as endorsement of the views expressed in the report.

You are also requested to refer to the disclaimer (which is deemed to be part and parcel and is applicable to this research report as well) : <http://www.investmentz.com/disclaimer>